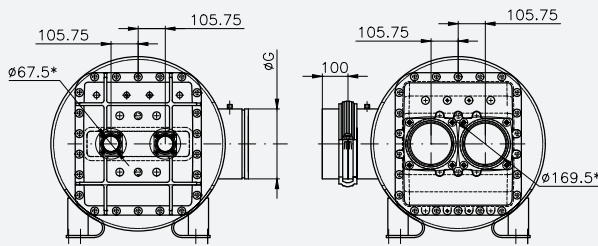
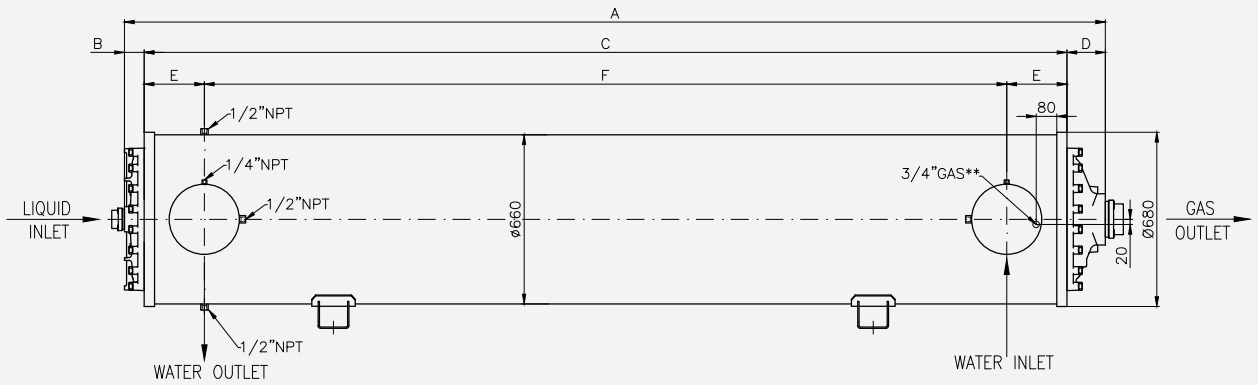
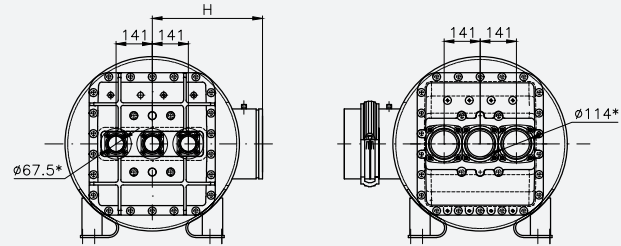


Length [mm]	Number of ranks	Weight [kg]	Water [dm ³]	Gas [dm ³]	A [mm]	B [mm]	C [mm]	D [mm]	E [mm]	F [mm]	G [mm]	Ø H [mm]	N° CCT
2750	1313	1017	727	136	2977	77	2750	150	235	2280	273	235	1CC/2CCT
	1414	1030	716	146									
	1818	1080	671	185									
	2020	1106	648	205									
3300	1313	1144	878	161	3527	77	3300	150	235	2830	273	235	1CC/2CCT
	1414	1160	865	173									
	1818	1223	811	220									
	2020	1255	783	243									
3600	1313	1214	961	175	3827	77	3600	150	235	3130	273	235	1CC/2CCT
	1414	1231	946	188									
	1818	1301	887	239									
	2020	1337	857	264									
3900	1313	1283	1043	189	4127	77	3900	150	235	3430	273	235	1CC/2CCT
	1414	1302	1027	203									
	1818	1380	963	258									
	2020	1418	931	286									
2750	777	1003	754	113	2977	77	2750	150	235	2280	273	235	3CCT
	888	1022	737	128									
	999	1041	721	142									
	1010	1060	704	156									
3300	777	1122	910	134	3527	77	3300	150	235	2830	273	235	3CCT
	888	1146	890	152									
	999	1169	871	168									
	1010	1193	850	185									
3600	777	1187	996	145	3827	77	3600	150	235	3130	273	235	3CCT
	888	1214	973	164									
	999	1240	953	182									
	1010	1267	930	201									
3900	777	1252	1081	156	4127	77	3900	150	235	3430	273	235	3CCT
	888	1281	1057	177									
	999	1310	1035	196									
	1010	1339	1010	217									

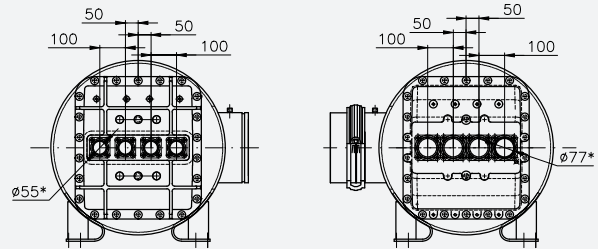
* Please contact technical dept. at WIELAND PROVIDES S.r.l. for more info



LIQUID INLET SIDE 2 CCT GAS SUCTION SIDE



LIQUID INLET SIDE 3 CCT GAS SUCTION SIDE



LIQUID INLET SIDE 4 CCT GAS SUCTION SIDE

* INTERNAL DIAMETER OF FERRULE
** HEAT RESISTANCE-ON THE OTHER SIDE