

Extruded Products

Stock Program Vöhringen

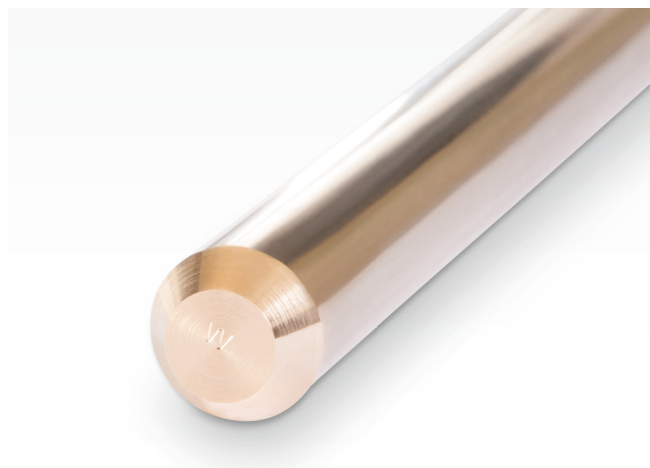




Round Rod drawn

Dimension		Packaging	Material No.	Condition	Tolerance (class)	End Finish			
mm	Weight kg/m								
Wieland-Z33, CuZn39Pb3, EN 12164 Precision Rod W5000, 3,000 ± 30 mm									
2.0	0.027	x	441302000	R500	h8	chamfered/pointed			
2.5	0.042	x	441302500						
3.0	0.060	x	441303000						
3.5	0.082	x	441303500						
4.0	0.107	x	441304000						
4.5	0.135	x	441304500						
5.0	0.167	x	441305000						
5.5	0.202	●	441305500						
6.0	0.240	●	441306000						
6.5	0.282	●	441306500						
7.0	0.327	●	441307000						
7.5	0.376	●	441307500						
8.0	0.427	●	441508000						
8.5	0.482	●	441508500						
9.0	0.541	●	441509000						
9.5	0.603	●	441509500						
10.0	0.668	o	441510000				R430	h8	chamfered/pointed
10.5	0.737	o	441510500						
11.0	0.808	o	441511000						
11.5	0.888	o	441511500						
12.0	0.961	o	441512000						
12.5	1.040	o	441512500						
13.0	1.128	o	441513000						
13.5	1.220	o	441513500						
14.0	1.308	o	441514000						
14.5	1.400	o	441514500						
15.0	1.502	o	441515000						
16.0	1.710	o	441516000						
17.0	1.929	o	441517000						
18.0	2.163	o	441518000						
19.0	2.410	o	441519000						
20.0	2.670	o	441520000						
21.0	2.944	o	441521000						
22.0	3.231	o	441522000						
23.0	3.552	o	441523000						
24.0	3.844	o	441524000						
25.0	4.160	o	441525000						
26.0	4.512	o	441526000						
27.0	4.880	o	441527000						
28.0	5.232	o	441528000						
29.0	5.600	o	441529000						
30.0	6.008	o	441530000						

Dimension		Packaging	Material No.	Condition	Tolerance (class)	End Finish
mm	Weight kg/m					
Wieland-Z33, CuZn39Pb3, EN 12164 Precision Rod W5000, 3,000 ± 30 mm						
31.0	6.432	o	441531000	R360	h9	both ends chamfered
32.0	6.840	o	441532000			
33.0	7.276	o	441533000			
34.0	7.716	o	441534000			
35.0	8.188	o	441535000			
36.0	8.652	o	441536000			
37.0	9.152	o	441537000			
38.0	9.640	o	441538000			
40.0	10.688	o	442140000			
42.0	11.780	o	442142000			
45.0	13.520	o	442145000	R360	h10	both ends chamfered
46.0	14.130	o	442146000			
48.0	15.380	o	442148000			
50.0	16.690	o	442150000			
52.0	18.050	o	442152000			
55.0	20.190	o	442155000			
56.0	20.940	o	442156000			
58.0	22.460	o	442158000			
60.0	24.030	o	442160000			
65.0	28.210	o	442165000			
70.0	32.710	o	442170000	R360	h11	sawn/ sawn
75.0	37.552	o	442175000			
80.0	42.726	o	442180000			





Round Rod extruded

Round Rod drawn

Dimension	Weight	Packaging	Material No.	Condition	Tolerance		Length	End Finish
					mm	mm		
Wieland-Z33, CuZn39Pb3, EN 12164								
85.0	48.23	o	442808500	extruded	±1.2	approx. 2,000–3,000	both ends sawn	
90.0	54.08	o	442809000					
95.0	60.25	o	442809500					
100.0	66.76	o	442810000					
105.0	73.56	o	442810500					
110.0	80.74	o	442811000					
115.0	88.24	o	442811500					
120.0	96.08	o	442812000					
125.0	104.25	o	442812500					
130.0	112.77	□	442813000					
140.0	130.78	□	442814000	extruded	±1.5	approx. 600–1,500	both ends sawn	
150.0	150.13	□	442815000					
160.0	170.82	□	442816000					
170.0	192.84	□	442917000					
180.0	216.90	□	442918000					
200.0	266.90	□	442920000					
210.0	294.26	□	442921000					
225.0	337.80	□	442922500					
250.0	417.03	□	442925000					

Dimension	Weight	Packaging	Material No.	Condition	Tolerance (class)	End Finish
Wieland-Z21, CuZn38Pb2, EN 12164						
3,000 ± 30 mm						
2.5	0.041	x	443302500	R410	B	chamfered/pointed
3.0	0.059	x	443303000			
3.5	0.081	x	443303500			
4.0	0.106	x	443304000			
4.5	0.134	x	443304500			
5.0	0.165	x	443305000			
5.5	0.200	●	443305500			
6.0	0.238	●	443306000			
7.0	0.323	●	443307000			
7.5	0.371	●	443307500			
8.0	0.422	●	443308000			
8.5	0.477	●	443308500			
9.0	0.534	●	443309000			
10.0	0.660	●	443310000			
11.0	0.798	o	443311000			
12.0	0.950	o	443312000			
13.0	1.115	o	443313000			
14.0	1.293	o	443314000			
15.0	1.484	o	443315000			
16.0	1.689	o	443316000			
17.0	1.907	o	443317000			
18.0	2.138	o	443318000			
20.0	2.639	o	443320000			
22.0	3.193	o	443322000			

Standard Packaging:

- x = wooden boxes of approx. 250 kg
- = wooden boxes of approx. 500 kg,
 - ≤ 5,5 mm in small bundles of 25 kg
- o = bundles of approx. 500 kg,
 - alternatively bundles of approx. 1,000 kg are possible
- = wooden pallet up to 1,500 kg





Round Rod drawn

Dimension	Weight	Packaging	Material No.	Condition	Tolerance	End Finish
mm	kg/m					
Wieland-Z41, CuZn40Pb2, CW617N, EN 12164						
W5000 Präzisionsstangen, 3,000 ± 30 mm						
14.0	1.295	○	443914000	R500	+0/-0.027	chamfered/pointed
15.0	1.486	○	443915000	R430		
17.0	1.909	○	443917000			
18.0	2.140	○	443918000			
19.0	2.384	○	443919000			
20.0	2.642	○	443920000			
22.0	3.197	○	443922000			
23.0	3.494	○	443923000			
24.0	3.805	○	443924000		+0/-0.033	
25.0	4.128	○	443925000			
26.0	4.465	○	443926000		+0/-0.062	
27.0	4.809	○	443927000			
28.0	5.178	○	443928000	+0/-0.10		
30.0	5.938	○	443930000			
32.0	6.764	○	443932000	+0/-0.16		
33.0	7.193	○	443933000			
36.0	8.550	○	443936000	both ends chamfered		
38.0	9.538	○	443938000			
40.0	10.568	○	443940000			
42.0	11.638	○	443942000			
48.0	15.218	○	443948000			
50.0	16.513	○	443950000			

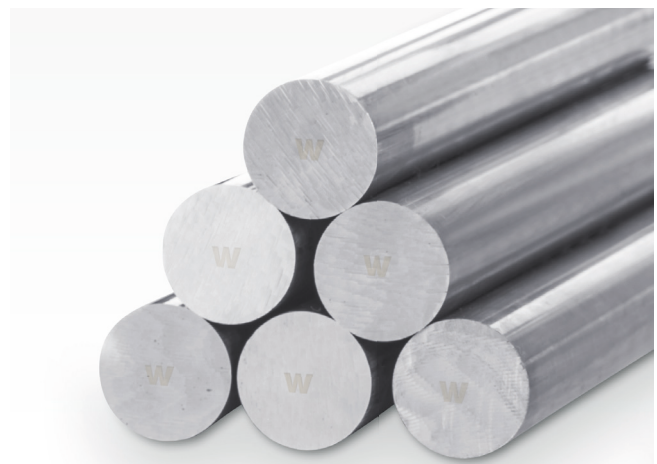
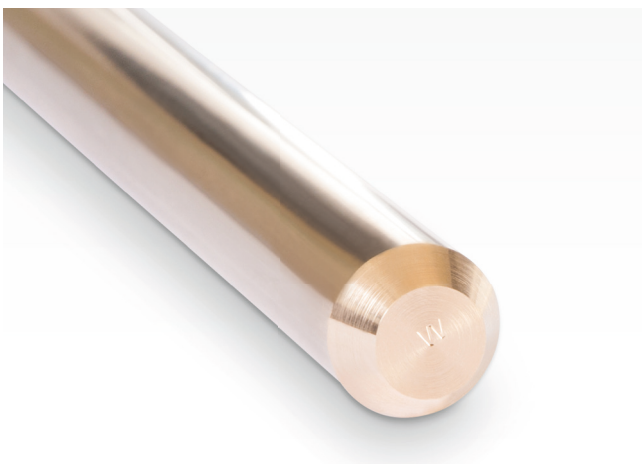


Round Rod drawn

Dimension	Weight	Packaging	Material No.	Condition	Tolerance (class)	End Finish
mm	kg/m					
Wieland-N31, CuNi7Zn39Pb3Mn2, EN 12164						
3,000 ± 30 mm						
8.0	0.418	●	446508000	R600	B	chamfered/pointed
10.0	0.655	●	446510000			
12.0	0.942	○	446512000			
14.0	1.282	○	446514000			
16.0	1.676	○	446516000	R500		
20.0	2.617	○	446520000			

Standard Packaging:

- x = wooden boxes of approx. 250 kg
- = wooden boxes of approx. 500 kg
- = bundles of approx. 500 kg



Rectangular Rod drawn

Dimension		Weight	Packaging	Material No.	Condition	Tolerance (class)	Length	End Finish
mm	kg/m		mm					
Wieland-Z33, CuZn39Pb3, EN 12167								
5 x 2	0.085	●	453005200	M	C	ca. 3,000	both ends sawn	
10 x 3	0.255	●	453110300					
10 x 4	0.340	●	453110400					
10 x 5	0.425	●	453110500					
10 x 6	0.510	●	453110600					
12 x 3	0.306	●	453112300					
12 x 4	0.408	●	453112400					
12 x 5	0.510	●	453112500					
12 x 6	0.612	●	453112600					
12 x 8	0.816	●	453112800					
12 x 10	1.020	○	453112000					
15 x 2	0.255	●	453015200					
15 x 3	0.382	●	453115300					
15 x 4	0.510	●	453115400					
15 x 5	0.637	●	453115500					
15 x 6	0.765	●	453115600					
15 x 8	1.020	●	453115800					
15 x 10	1.275	○	453116000					
20 x 3	0.510	●	453120300					
20 x 4	0.680	●	453120400					
20 x 5	0.850	●	453120500					
20 x 6	1.020	●	453120600					
20 x 8	1.360	●	453120800					
20 x 10	1.700	○	453121000					
20 x 12	2.040	○	453121200					
20 x 15	2.550	○	453121500					
25 x 2	0.425	●	453025200					
25 x 3	0.637	●	453125300					
25 x 4	0.850	●	453125400					
25 x 5	1.062	●	453125500					
25 x 6	1.275	●	453125600					
25 x 8	1.700	●	453125800					
25 x 10	2.125	○	453126000					
25 x 12	2.550	○	453126200					
25 x 15	3.188	○	453126500					
25 x 20	4.250	○	453127000					

Dimension		Weight	Packaging	Material No.	Condition	Tolerance (class)	Length	End Finish
mm	kg/m		mm					
Wieland-Z33, CuZn39Pb3, EN 12167								
30 x 3	0.765	●	453130300	M	C	ca. 3,000	both ends sawn	
30 x 4	1.020	●	453130400					
30 x 5	1.275	●	453130500					
30 x 6	1.530	●	453130600					
30 x 8	2.040	●	453130800					
30 x 10	2.550	○	453131000					
30 x 15	3.825	○	453131500					
30 x 20	5.100	○	453132000					
35 x 10	2.975	○	453136000					
35 x 20	5.950	○	453137000					
40 x 3	1.020	●	453140300					
40 x 4	1.360	●	453140400					
40 x 5	1.700	●	453140500					
40 x 6	2.040	●	453140600					
40 x 8	2.720	●	453140800					
40 x 10	3.400	○	453141000					
40 x 12	4.080	○	453141200					
40 x 15	5.100	○	453141500					
40 x 20	6.800	○	453142000					
40 x 25	8.500	○	453142500					
40 x 30	10.200	○	453143000					
50 x 5	2.120	●	453150500					
50 x 6	2.550	●	453150600					
50 x 8	3.400	●	453150800					
50 x 10	4.250	○	453151000					
50 x 15	6.375	○	453151500					
50 x 20	8.500	○	453152000					
50 x 25	10.625	○	453152500					
50 x 30	12.750	○	453153000					
60 x 6	3.060	●	453160600					
60 x 10	5.100	○	453161000					
60 x 20	10.200	○	453162000					
60 x 30	15.300	○	453163000					
60 x 40	20.400	○	453164000					
70 x 10	5.950	○	453171000					
80 x 10	6.800	○	453181000					
80 x 20	13.600	○	453182000					
100 x 10	8.500	○	453191000					
100 x 20	17.000	○	453192000					

Standard Packaging:

- = wooden boxes of approx. 500 kg
- = bundles of approx. 500 kg

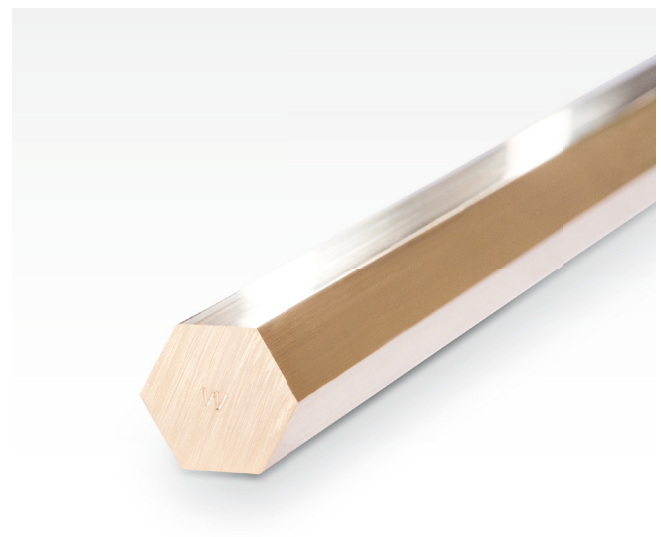


Hexagonal Rod drawn

Dimension mm	Weight kg/m	Packaging	Material No.	Condition	Tolerance	Length mm	End Finish
Wieland-Z33, CuZn39Pb3, EN 12164 W5006							
4.0	0.118	x	451104000	R500	+0/-0.08	3,000 ± 30	chamfered/pointed
4.5	0.149	x	451104500				
5.0	0.184	x	451105000				
5.5	0.223	●	451105500				
6.0	0.265	●	451106000				
7.0	0.361	●	451107000				
8.0	0.471	●	451108000				
9.0	0.596	●	451109000				
10.0	0.736	●	451110000				
11.0	0.892	○	451111000		R430		
12.0	1.060	○	451112000				
13.0	1.244	○	451113000				
14.0	1.444	○	451114000				
15.0	1.656	○	451115000				
16.0	1.884	○	451116000				
17.0	2.128	○	451417000				
18.0	2.384	○	451418000				
19.0	2.656	○	451419000				
20.0	2.944	○	451420000				
21.0	3.256	○	451421000				
22.0	3.563	○	451422000				
24.0	4.240	○	451424000				
25.0	4.600	○	451425000				
27.0	5.370	○	451427000				
30.0	6.624	○	451430000				
32.0	7.540	○	451432000				
36.0	9.540	○	451236000	M	+0/-0.16	3,000 ± 100	both ends sawn

Standard Packaging:

- x = wooden boxes of approx. 250 kg
- = wooden boxes of approx. 500 kg,
 < 6 mm in small bundles of 25 kg
- = bundles of approx. 500 kg,
 alternatively bundles of approx. 1,000 kg are possible



Dimension	Weight	Packaging	Material No.	Condition	Tolerance	Length	End Finish
eco SW1, CuZn21Si3P, CW724R, EN 12164/C69300 Rundstangen, 3,000 mm							
7.0	0.317	●	479207000	R670	+0/-0.036		
8.0	0.415	●	479208000				
9.0	0.525	●	479209000				
10.0	0.648	○	479210000				
11.0	0.784	○	479211000				
12.0	0.933	○	479212000				
13.0	1.095	○	479213000				
14.0	1.270	○	479214000				
15.0	1.458	○	479215000				
16.0	1.659	○	479216000				
17.0	1.873	○	479217000	R600	+0/-0.043	+/-50	chamfered/pointed
18.0	2.099	○	479218000				
19.0	2.339	○	479219000				
20.0	2.592	○	479220000				
22.0	3.136	○	479222000				
23.0	3.428	○	479223000				
24.0	3.732	○	479224000				
25.0	4.050	○	479225000				
27.0	4.724	○	479227000				
28.0	5.080	○	479228000				
30.0	5.832	○	479230000	R500	+0/-0.052		
32.0	6.635	○	479232000				
35.0	7.937	○	479235000				
38.0	9.356	○	479238000				
40.0	10.367	○	479240000				
42.0	11.430	○	479242000				
45.0	13.114	○	479245000				
48.0	14.929	○	479248000				
50.0	16.199	○	479250000				

Dimension	Weight	Packaging	Material No.	Condition	Tolerance (class)	End Finish
eco SZ4®, CuZn42, CW510L, EN12164 Rundstangen, 3,000 ± 50 mm						
4.0	0.103	x	444404000	R500	h9	chamfered/pointed
5.0	0.161	x	444405000			
6.0	0.232	●	444406000			
8.0	0.412	●	444408000			
10.0	0.644	○	444410000			
12.0	0.927	○	444412000			
14.0	1.262	○	444414000			
20.0	2.576	○	444420000			
30.0	5.796	○	444430000			

Dimension	Weight	Packaging	Material No.	Condition	Tolerance (class)	End Finish
eco SZ3®, CuZn40SiP Rundstangen, 3,000 mm ± 50 mm						
3.0	0.060	x	444303000	W-R520		
4.0	0.106	x	444304000			
5.0	0.166	x	444305000			
6.0	0.232	●	444306000			
7.0	0.316	●	444307000			
8.0	0.413	●	444308000			
9.0	0.522	●	444309000			
10.0	0.645	○	444310000			
11.0	0.780	○	444311000			
12.0	0.929	○	444312000			
13.0	1.090	○	444313000	W-R460	h9	chamfered/pointed
14.0	1.264	○	444314000			
15.0	1.451	○	444315000			
16.0	1.651	○	444316000			
17.0	1.864	○	444317000			
18.0	2.089	○	444318000			
19.0	2.328	○	444319000			
20.0	2.579	○	444320000			
22.0	3.121	○	444322000			
24.0	3.714	○	444324000			
25.0	4.030	○	444325000	W-R460	h11	both ends chamfered
26.0	4.359	○	444326000			
27.0	4.701	○	444327000			
28.0	5.055	○	444328000			
30.0	5.803	○	444330000			
32.0	6.603	○	444332000			
35.0	7.899	○	444335000			
40.0	10.317	○	444340000			
45.0	13.057	○	444345000			
50.0	16.120	○	444350000			
60.0	23.213	○	444360000			

Standard Packaging:

x = wooden boxes of approx. 250 kg

● = wooden boxes of approx. 500 kg,
≤ 5,5 mm in small bundles of 25 kg

○ = bundles of approx. 500 kg,

alternatively bundles of approx. 1,000 kg are possible



wieland

Wieland-Werke AG | Graf-Arco-Straße 36 | 89079 Ulm | Deutschland
info@wieland.com | wieland.com

Characteristics and properties of products / materials in this document are generic and provided solely for general information purposes. Any statement regarding the suitability of products / materials for certain types of applications is based on typical requirements and does not replace expert advice. Wieland disclaims all liability arising from any reliance on these documents.